

Configuring for Voltage Secure Policy Suite

Version 1.0

By

Ross Cartwright, CCNA

Table of Contents

Preparing for Install	3
Configuring Voltage Secure Policy Suite	3
Java Installation	5
MySQL Installation	5
Voltage Installation	5
Configuring Voltage.sql.bat	5
Configuring MySQL	6
Configuring District Initializer	8
Configuring District Loader	8
Server Configuration File Properties	9
Generating Keys	10
Requesting Certificate	11
Logging into Voltage Dashboard	14
Appendix A	15
How to Alias Your Server to Multiple IP Addresses	15
Adding computer to Active Directory Domain	18
Trademarks	19

Preparing for Install

1. Install Service Pack 3 for Windows 2000.
2. **DO NOT** include IIS 5.0 when selecting which components to install. *

* It is important that IIS 5.0 is not running on your Windows 2000 Server system or else the Voltage Server will not run properly. If it is already currently running on your computer, remove it.

Configuring Voltage Secure Policy Suite

1. Go to "Computer Management" by right clicking on "My Computer" from the desktop, then selecting "Manage."
2. Create **VoltageConfigAdmins** as a local group.
3. Create **VoltageAuditAdmins** as a local group.

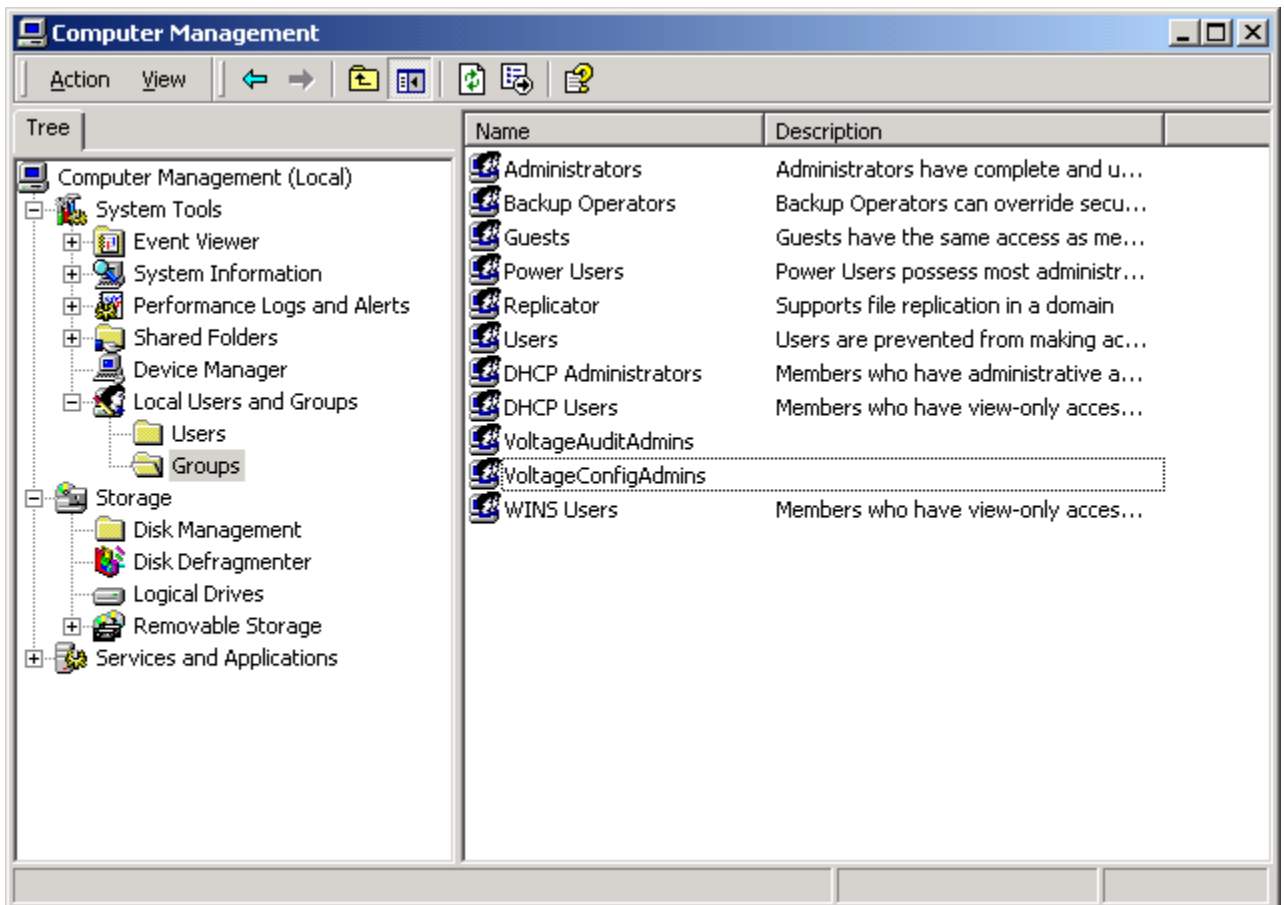


Figure - 1

4. Add Administrator from local group to **VoltageAuditAdmins**
5. Add Administrator from global group to **VoltageAuditAdmins**
6. Add <voltage user> from global group to **VoltageAuditAdmins**

7. Repeat procedure for **VoltageConfigAdmins**

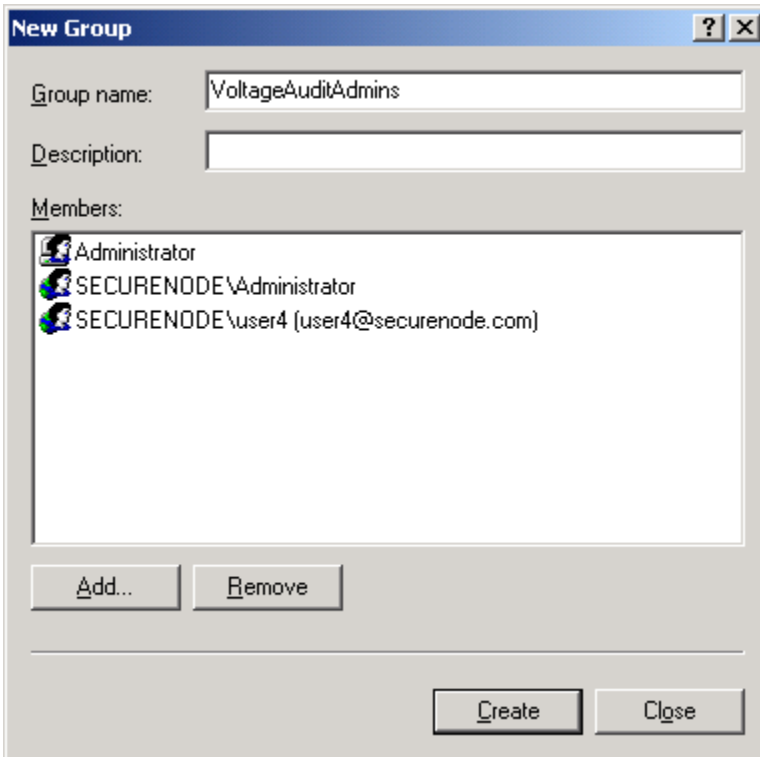
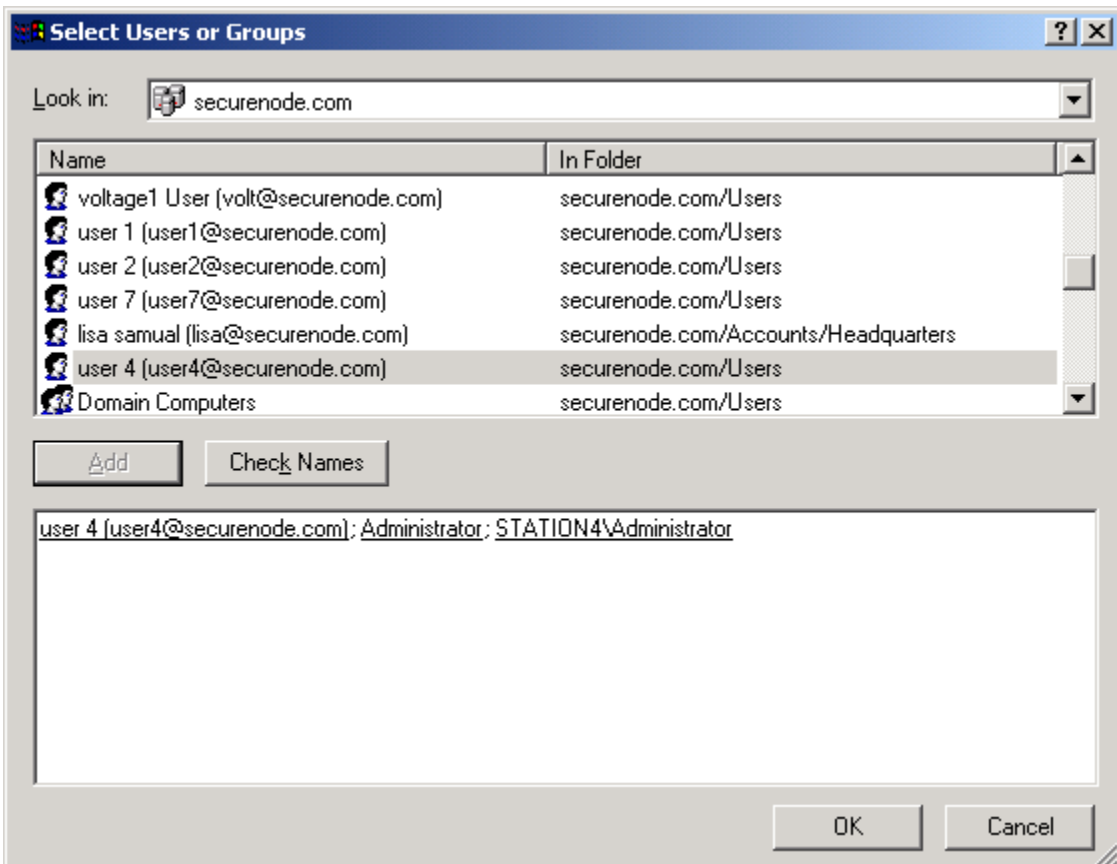


Figure - 2



Java Installation

1. Download and install Sun J2SE JRE 1.4.1 from:
<http://java.sun.com/j2se/1.4.1/download.html>

MySQL Installation

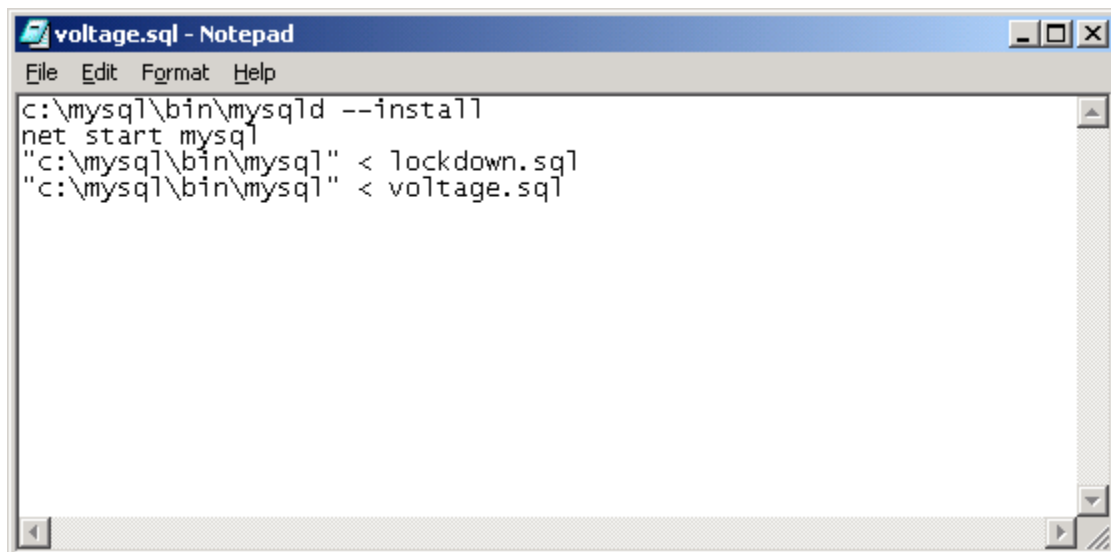
1. Unzip mysql-4.1.0-alpha.zip to c:\ (default)

Voltage Installation

1. Run **VoltageServerInstaller_2.1.0x.exe** to begin installation wizard.
2. Unzip **mysql-connector-java-3.1.0-x.zip** to C:\Program Files\Voltage Security\Voltage SecurePolicy Suite\lib\.
3. Copy **mysql-connector-java-3.0.x-stable-bin.jar** to C:\Program Files\Voltage Security\Voltage SecurePolicy Suite\lib\.

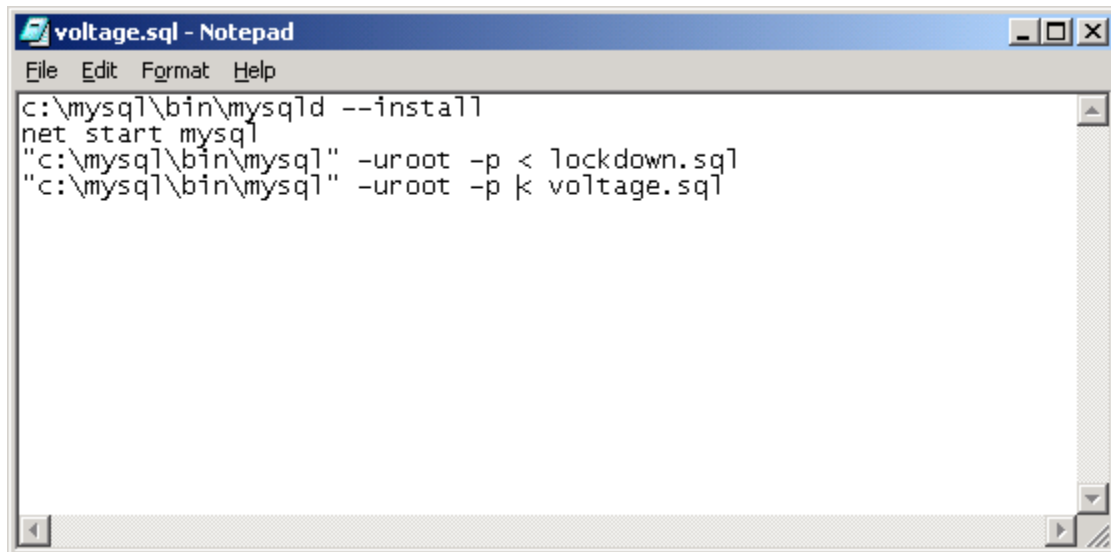
Configuring Voltage.sql.bat

1. Edit **voltage.sql.bat**, found under C:\Program Files\Voltage Security\Voltage SecurePolicy Suite\etc\.



```
File Edit Format Help
c:\mysql\bin\mysqld --install
net start mysql
"c:\mysql\bin\mysql" < lockdown.sql
"c:\mysql\bin\mysql" < voltage.sql
```

Figure - 4



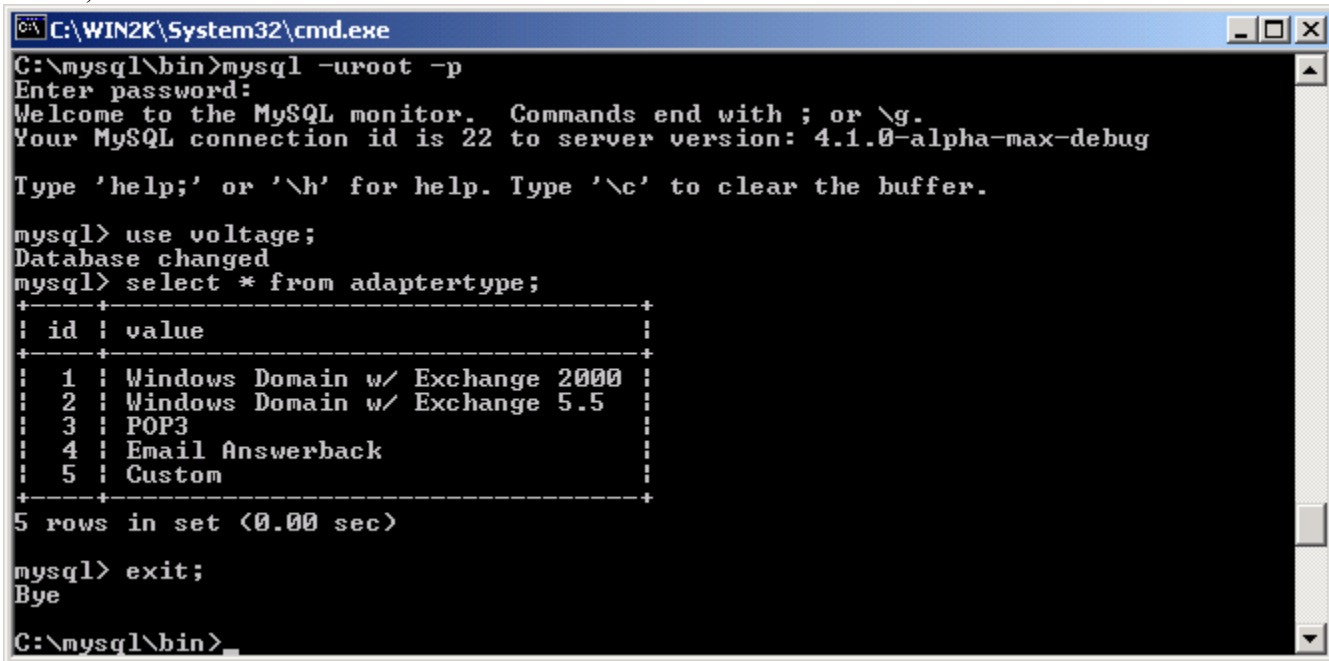
```
File Edit Format Help
c:\mysql\bin\mysqld --install
net start mysql
"c:\mysql\bin\mysql" -uroot -p < lockdown.sql
"c:\mysql\bin\mysql" -uroot -p | voltage.sql
```

Figure - 5

2. Execute **voltage.sql.bat**.
3. Hit <Enter> for password.

Configuring MySQL

1. Copy **libmysql.dll**, from `mysql\lib\opt` to `c:\%systemroot%\system32\`
2. Start **MySQLAdmin**
3. Login with any User / Password
4. Make sure `mysql` is running in Services.
 1. Run `mysql -uroot -p`
 2. For Password, press <enter>.
 3. At `mysql` prompt, type: `use voltage;`
 4. Type: `select * from adaptertype;`
 5. Type: `exit;`



```
C:\WIN2K\System32\cmd.exe
C:\mysql\bin>mysql -uroot -p
Enter password:
Welcome to the MySQL monitor.  Commands end with ; or \g.
Your MySQL connection id is 22 to server version: 4.1.0-alpha-max-debug

Type 'help;' or '\h' for help. Type '\c' to clear the buffer.

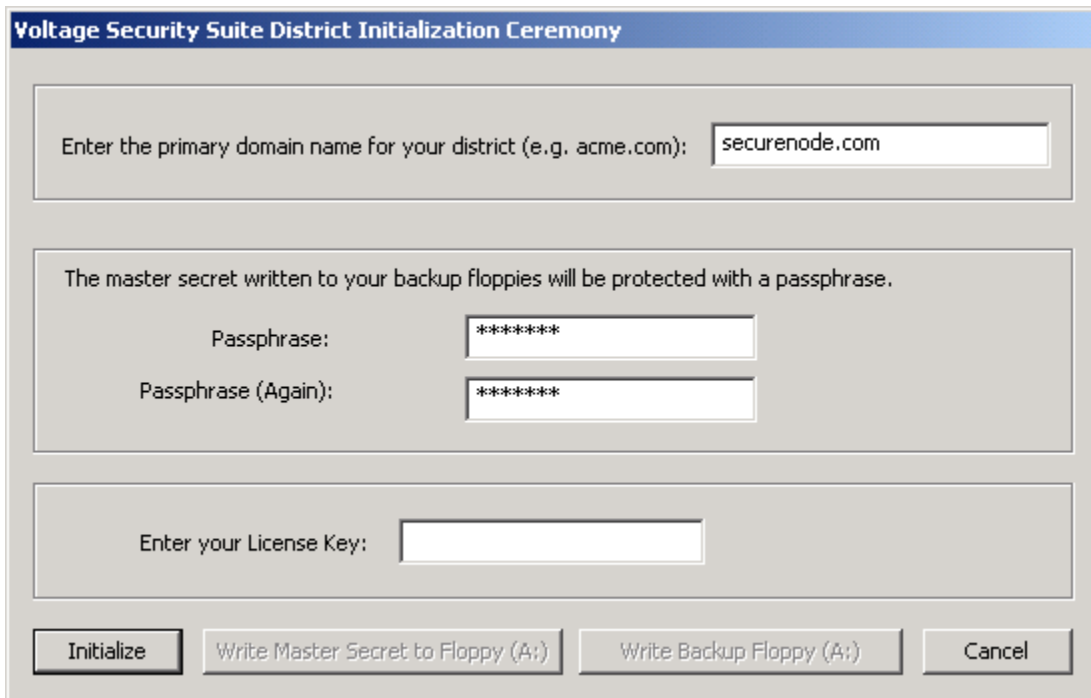
mysql> use voltage;
Database changed
mysql> select * from adaptertype;
+----+-----+
| id | value                |
+----+-----+
|  1 | Windows Domain w/ Exchange 2000 |
|  2 | Windows Domain w/ Exchange 5.5  |
|  3 | POP3                  |
|  4 | Email Answerback     |
|  5 | Custom                |
+----+-----+
5 rows in set (0.00 sec)

mysql> exit;
Bye
C:\mysql\bin>
```

Figure - 6

Configuring District Initializer

1. Run the "District Initializer" application in the "Voltage SecurePolicy Suite."
2. Enter the License Key Provided by Voltage Inc. TM
3. Initialize and write to Master and Backup Floppy (A:).



The screenshot shows a dialog box titled "Voltage Security Suite District Initialization Ceremony". It contains three main input sections: 1. A text field for the primary domain name, with "securenode.com" entered. 2. Two text fields for a passphrase, both containing "*****". 3. A text field for the License Key, which is currently empty. At the bottom, there are four buttons: "Initialize", "Write Master Secret to Floppy (A:)", "Write Backup Floppy (A:)", and "Cancel".

Figure - 7

Configuring District Loader

1. Run District Loader in "Voltage SecurePolicy Suite" directory
2. Enter the Passphrases.

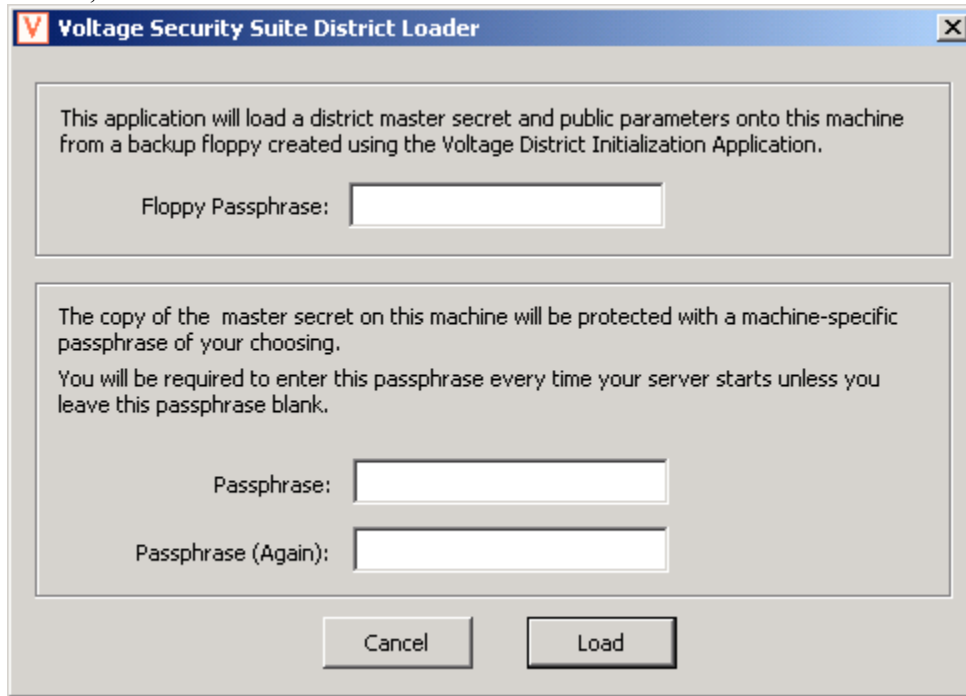


Figure - 8

Server Configuration File Properties

1. Right click on **server.conf**, found in C:\Program Files\Voltage Security\Voltage SecurePolicy Suite\etc\.
2. Select Properties
3. Select Security Tab.
4. Select System User
5. Uncheck "Allow inheritable permissions from parent to propagate to this object" checkbox. When asked for verification, select "Remove."
6. Modify the properties so that all administrator groups have all privileges, while the **SYSTEMS** group & **VoltageConfigAdmins** group only has "Read & Execute" and "Read" privileges

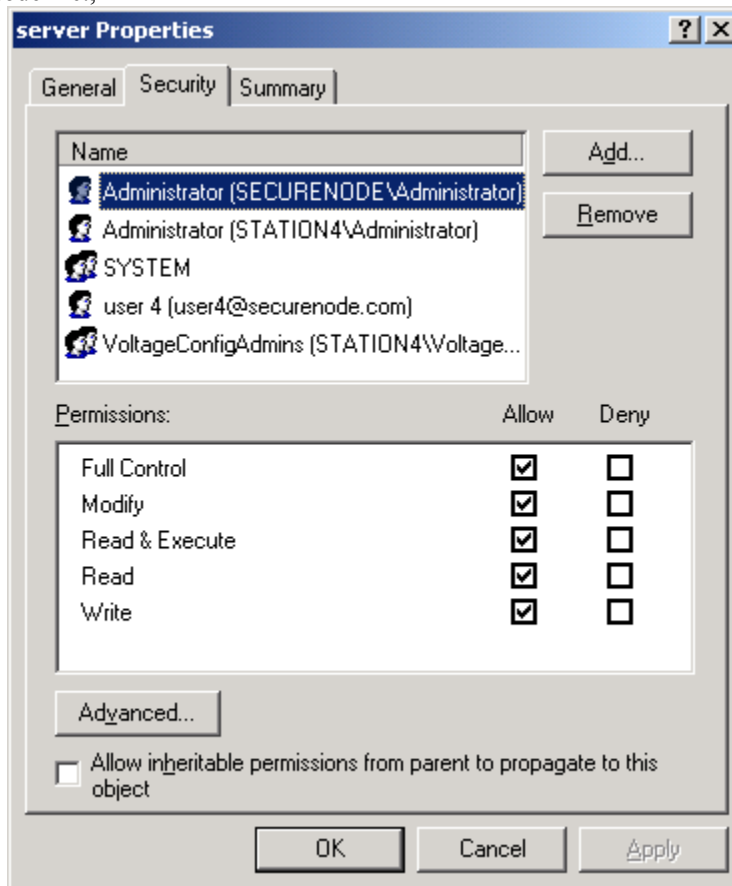


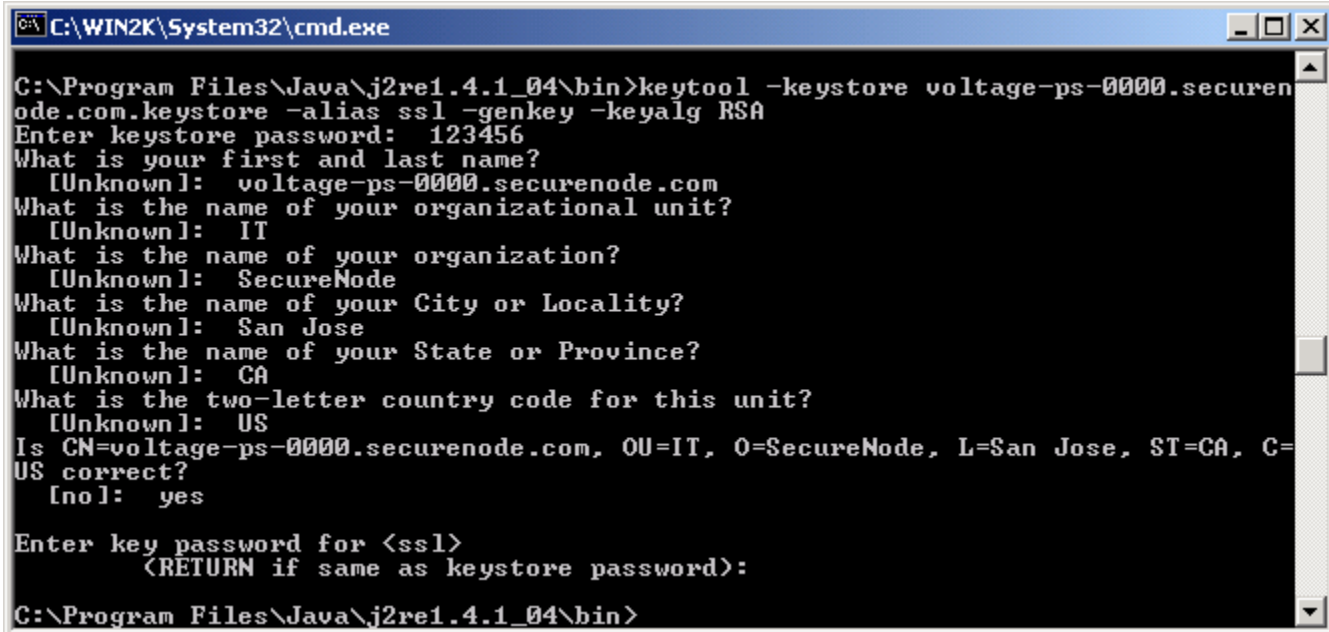
Figure - 9

7. Open **server.conf** with notepad. Change the information to:

```
ssl.keystore.voltage-ps-0000.<domain>=C:/Program Files/Voltage Security/Voltage
SecurePolicy Suite/etc/voltage-ps-0000.<domain>.keystore
ssl.password.voltage-ps-0000.<domain>=123456
ssl.keystore.voltage-pp-0000.<domain>=C:/Program Files/Voltage Security/Voltage
SecurePolicy Suite/etc/voltage-pp-0000.<domain>.keystore
ssl.password.voltage-pp-0000.<domain>=123456
lib.dir=C:/Program Files/Voltage Security/Voltage SecurePolicy Suite/lib
token.secret=
db.driver=com.mysql.jdbc.Driver
db.url=jdbc:mysql://localhost/voltage?user=root&password=&autoReconnect=true
admin.netmask=127.0.0.1/0.0.0.0
```

Generating Keys

1. From DOS prompt, go to C:\Program Files\Java\j2re1.4.1_04\bin
2. Type: **keytool -keystore voltage-ps-0000.<domain>.keystore -alias ssl -genkey -keyalg RSA**
Enter keystore password: **123456**
3. Enter information.



```
C:\WIN2K\System32\cmd.exe
C:\Program Files\Java\j2re1.4.1_04\bin>keytool -keystore voltage-ps-0000.securenode.com.keystore -alias ssl -genkey -keyalg RSA
Enter keystore password: 123456
What is your first and last name?
[Unknown]: voltage-ps-0000.securenode.com
What is the name of your organizational unit?
[Unknown]: IT
What is the name of your organization?
[Unknown]: SecureNode
What is the name of your City or Locality?
[Unknown]: San Jose
What is the name of your State or Province?
[Unknown]: CA
What is the two-letter country code for this unit?
[Unknown]: US
Is CN=voltage-ps-0000.securenode.com, OU=IT, O=SecureNode, L=San Jose, ST=CA, C=US correct?
[no]: yes

Enter key password for <ssl>
(RETURN if same as keystore password):

C:\Program Files\Java\j2re1.4.1_04\bin>
```

Figure - 10

Requesting Certificate

1. Type: **keytool -keystore voltage-ps-0000.<domain>.keystore -certreq -alias ssl -file voltage-ps-0000.<domain>.csr**
Enter keystore password: **123456**
2. Repeat both keytool procedures for **voltage-pp-0000.<domain>**
3. Go to Certificate Authority site (ie. www.entrust.com/freecerts)
4. Select certificates for web --> web server.

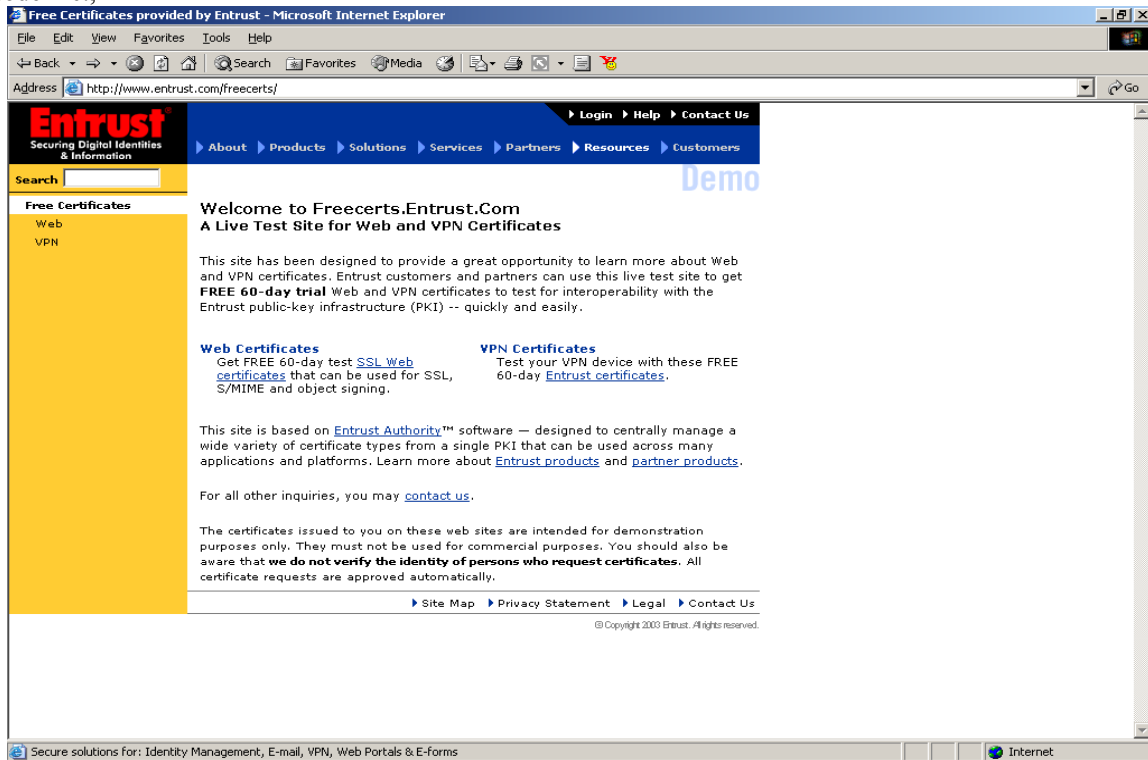


Figure – 11

5. Open `voltage-ps-0000.<domain>.csr` with notepad.
6. Copy certificate (in PKCS#10 format) into the box shown below.

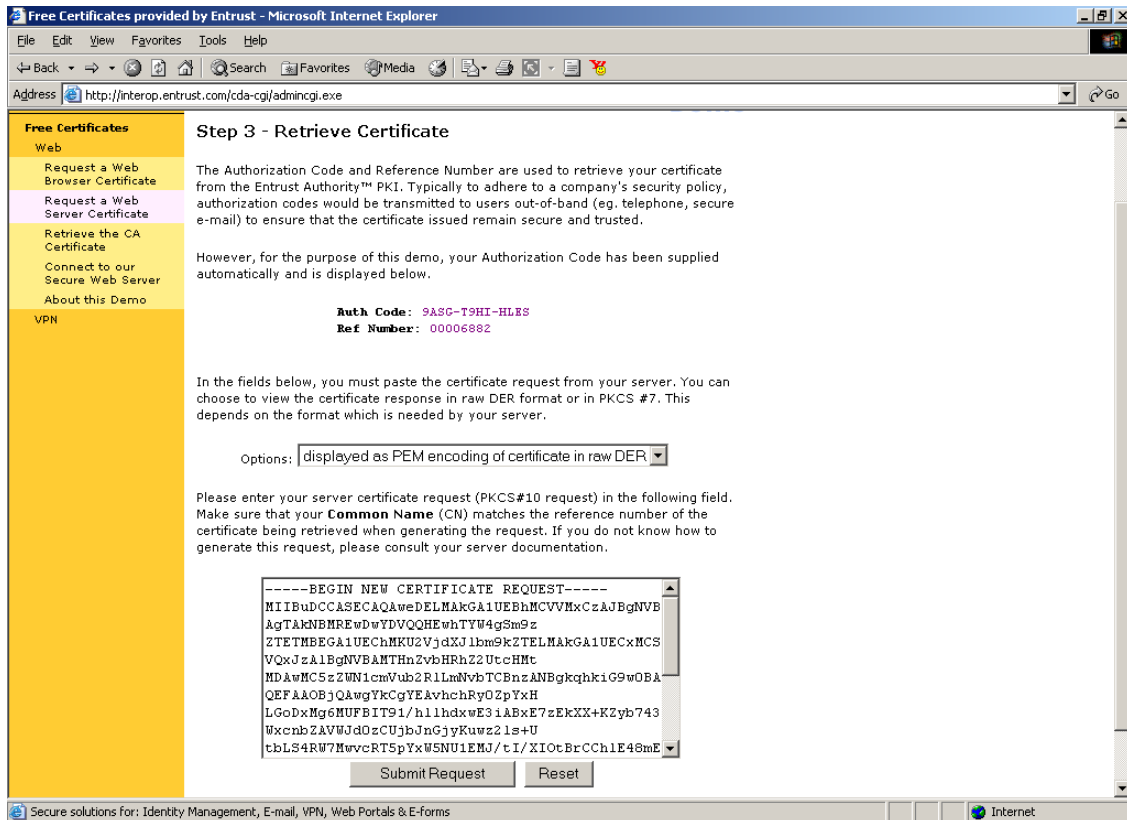


Figure - 12

SecureNode Inc.,

The last step is to import this certificate into your keystore:

1. Type: **keytool -keystore voltage-ps-0000.<domain>.keystore -import -alias ca -file ps.pem**
2. Type: **keytool -keystore voltage-ps-0000.<domain>.keystore -import -alias ssl -file voltage-ps-0000.<domain>.cer**
3. Repeat both keytool procedures for **voltage-pp-0000.<domain>.cer**
4. Copy **voltage-ps-0000.securenode.com.keystore** & **voltage-ps-0000.<domain>.keystore** to C:\Program Files\Voltage Security\Voltage SecurePolicy Suite\etc\.

Logging into Voltage Dashboard

1. Restart Voltage Server in Services.
2. Start Internet explorer
3. Enter URL: **https://voltage-ps-0000.<domain>/admin**

Appendix A

How to Alias Your Server to Multiple IP Addresses

1. Double click on the LAN icon in the bottom right corner of the taskbar.
2. Configure the LAN Properties.

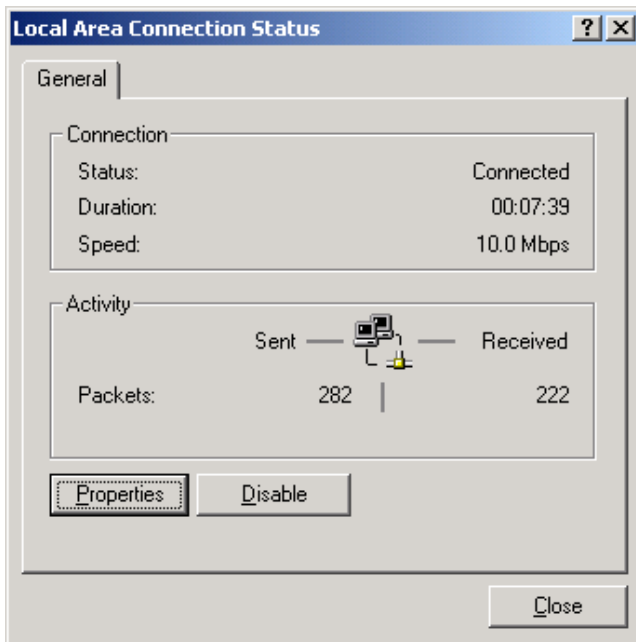


Figure – 15

3. Set static IP address
4. Enter subnet mask
5. Enter default gateway
6. Set DNS Server according to your company's LAN network configuration.

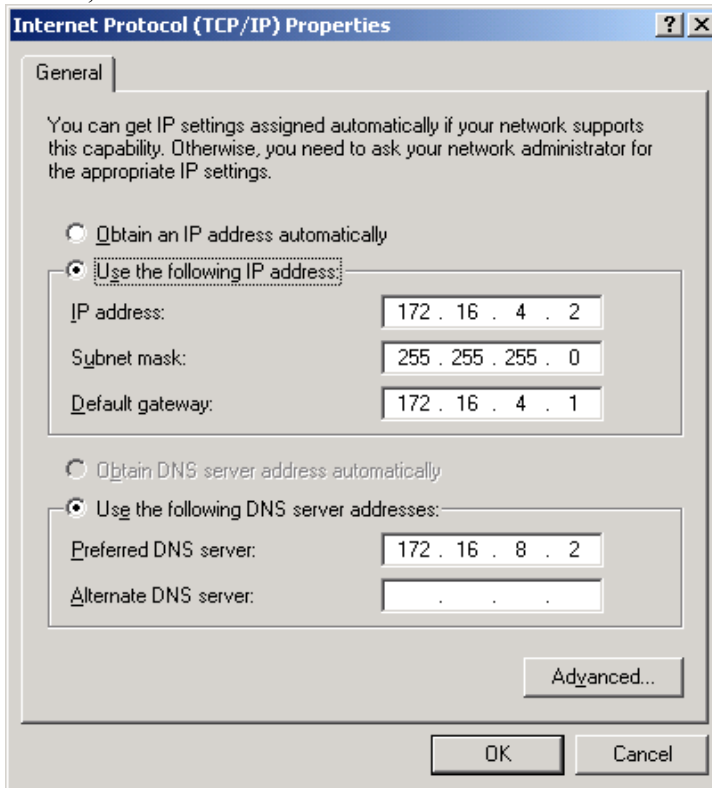


Figure - 16

7. Click on Advanced and **ADD** a second IP address.

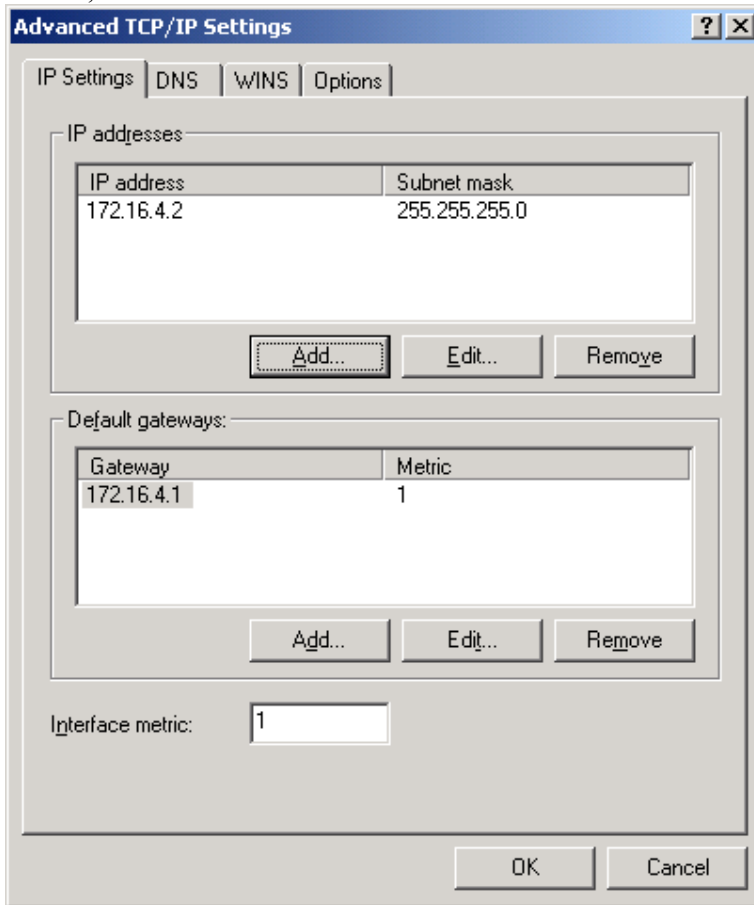


Figure - 17

8. Enter IP address for voltage-pp-0000.<domain>.

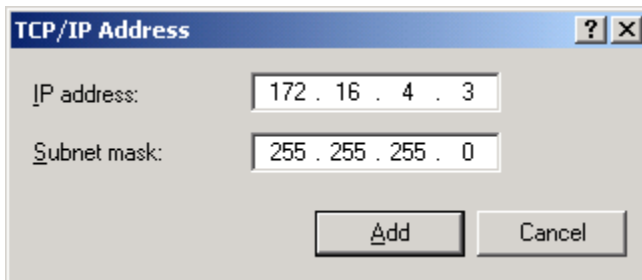


Figure - 18

Adding computer to Active Directory Domain

Right click on “My computer” and select “Properties”, under Network Identification Tab, make sure you computer is member of “Domain”

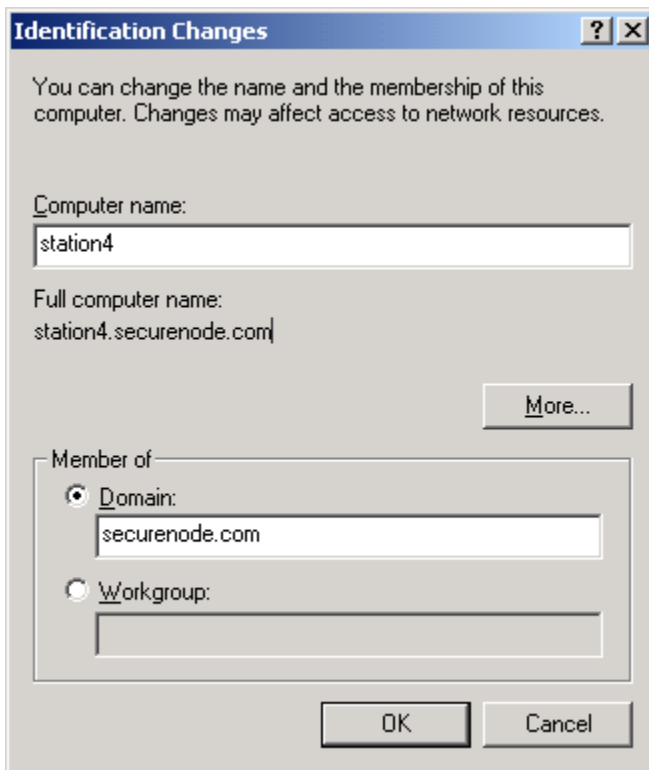


Figure - 19

SecureNode Inc.,

Trademarks.

Trademarks owned by Voltage, the Voltage logo, and all other trademarks, service marks, and trade names of Voltage appearing in this document are owned by Voltage Security, Inc. Voltage' s trademarks, logos, service marks, and trade names may not be used in connection with any product or service that is not Voltage' s, in any manner that is likely to cause confusion, or in any manner that disparages or discredits Voltage. All other trademarks, product or service names, brand names, company names and/or logos appearing in this document are the property of their respective owners.